

Experience University Research

at UCI Division of Continuing Education

ip.ce.uci.edu/EUR



Remote Options

via Synchronous Zoom Sessions



Remote Options

Fully Synchronous Courses via Zoom

Spring, Fall, & Winter Quarters

- Individual Saturday classes

Summer 2021

- 3 Week Intensive Programs



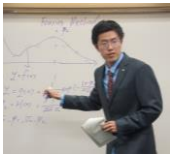


EUR Highlights

- **Small Classes**
- **Live Remote Sessions**
- **Project-Based Learning**
- **International Classmates**
- **In-Demand Skills**

Spring 2021 Course Options

April 10 – June 12



Young Entrepreneurs: Skills for Success

Develop business plans and learn how to sell your ideas



Designing & Integrating IoT Devices

Learn Python as you create and program smart devices



Spring, Fall, & Winter Fees

\$575 USD per Course

Includes:

- UCI Online Account
- 15 Hours of Synchronous Instruction
- Student Support
- UCI Certificate & Transcript



Summer Intensive Program Options

July 26 – August 13, 2021



AI & Machine Learning

Explore artificial neural networks



Law

Review cases, the US legal system, and fundamentals of intellectual property law




Business & Finance

Learn the drivers of trade, investment, risks, & more

Sample Program Calendar

Schedule subject to change.

SUNDAY	MONDAY	TUESDAY	WEDNESDAY	THURSDAY	FRIDAY	SATURDAY
	<p>Online Welcome & Orientation 09:00 – 10:20</p> <p>Intro to Machine Learning 10:30 – 11:50</p>	<p>PRESENTATION UCI School of ICS 08:00 – 08:50</p> <p>AI Applications in Engineering 09:00 – 11:50</p>	<p>Academic Writing for STEM 09:00 – 10:20</p> <p>Intro to Machine Learning 10:30 – 11:50</p>	<p>AI Applications in Engineering 09:00 – 11:50</p> <p>Conversation Partner Meeting 12:00 – 13:00</p>	<p>Academic Writing for STEM 09:00 – 10:20</p> <p>Intro to Machine Learning 10:30 – 11:50</p>	<p>Free Day</p>
<p>Free Day</p>	<p>Academic Writing for STEM 09:00 – 10:20</p> <p>Intro to Machine Learning 10:30 – 11:50</p>	<p>AI Applications in Engineering 09:00 – 11:50</p> <p>Conversation Partner Meeting 12:00 – 13:00</p> <p>Student Panel 12:00 – 13:00</p>	<p>Academic Writing for STEM 09:00 – 10:20</p> <p>Intro to Machine Learning 10:30 – 11:50</p>	<p>Virtual Lab Tour 08:00 – 08:50</p> <p>AI Applications in Engineering 09:00 – 11:50</p> <p>Conversation Partner Meeting 12:00 – 13:00</p>	<p>Academic Writing for STEM 09:00 – 10:20</p> <p>Intro to Machine Learning 10:30 – 11:50</p>	<p>Free Day</p>
<p>Free Day</p>	<p>Academic Writing for STEM 09:00 – 10:20</p> <p>Intro to Machine Learning 10:30 – 11:50</p>	<p>AI Applications in Engineering 09:00 – 11:50</p> <p>Conversation Partner Meeting 12:00 – 13:00</p>	<p>Academic Writing for STEM 09:00 – 10:20</p> <p>Intro to Machine Learning 10:30 – 11:50</p>	<p>AI Applications in Engineering 09:00 – 11:50</p> <p>Conversation Partner Meeting 12:00 – 13:00</p>	<p>Academic Writing for STEM 09:00 – 10:20</p> <p>Intro to Machine Learning 10:30 – 11:50</p> <p>Closing Ceremony 11:50 – 12:10</p>	

Sample Course Homepage

UCI
DCE
Canvas

Account

Dashboard

Courses

Calendar

Books

Communi

Help

I&C SCI_X426.40 (SUMMER 2020/REG 00404/SEC 1)

Summer 2020

Home

Modules

Zoom

Discussions

Quizzes

Assignments

Files 95

Pages 95

Conferences 95

Rubrics 95

Outcomes 95

Collaborations 95

Syllabus 95

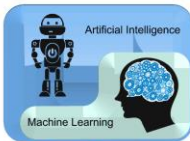
Settings

I&C SCI_X426.40: Introduction to Machine Learning & AI (SUMMER 2020/REG 00404/SEC 1)

Edit

I&C SCI X426.40

INTRODUCTION TO MACHINE LEARNING & AI



Modules Syllabus

Import Existing Content

Import from Commons

Choose Home Page

View Course Stream

Student View

View Course Notifications

Coming Up

View Calendar

Nothing for the next week.

Getting Started This course is organized by weekly modules. The modules link acts as a guide through your weekly content and deliverable.



Summer Intensive Program Fees

\$1,250 USD per Student

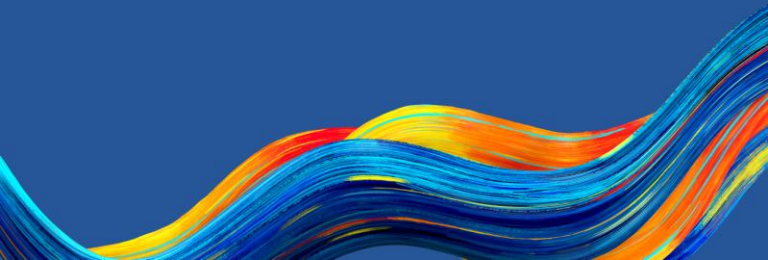
Includes:

- UCI Online Account
- 30+ Hours of Synchronous Instruction
- Conversation Partners
- Career Planning Sessions
- Student Support
- UCI Certificate & Transcript



Summer EUR Package

at the UCI Campus (resuming 2022)





Program Highlights


- **3-4 Weeks**
- **UCI Dormitories**
- **80+ Class Hours**
- **Campus & Lab Tours**
- **Conversation Partners**



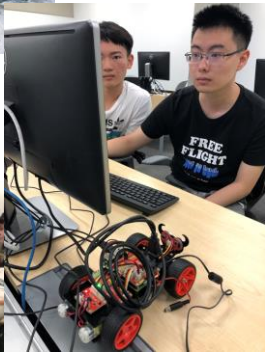
Program Highlights

- Academic & Career Advising
- Cultural Activities
- Airport Transfers
- Health Insurance
- \$5,000 / Student

Sample Program Calendars

SUNDAY	MONDAY	TUESDAY	WEDNESDAY	THURSDAY	FRIDAY	SATURDAY
<p>August 4</p> <p>WELCOME TO UCI</p> <p>Housing Check-In</p> 	<p>5</p> <p>Program Orientation 9:00am – 12:00pm CE1 3050-40</p> <p>Welcome lunch & Campus Tour 12:00pm – 2:00pm</p> <p>EUR MIXER 2:00pm – 4:00pm CE1 3050-40</p>	<p>6</p> <p>Advanced Writing Composition 9:00am – 10:20am CE1 3060</p> <p>Global Communication Skills 10:30am – 11:50am CE1 3050</p> <p>Conversation Partner Meeting 1:00pm – 4:00pm</p> <p>Social Ecology Dinner 3:00pm – 7:00pm The Amphitheater</p>	<p>7</p> <p>Advanced Writing Composition 9:00am – 10:20am CE1 3060</p> <p>Global Communication Skills 10:30am – 11:50am CE1 3050</p> <p>Social Ecology 1:00pm – 4:00pm SBS 3220</p>	<p>8</p> <p>Advanced Writing Composition 9:00am – 10:20am CE1 3060</p> <p>Global Communication Skills 10:30am – 11:50am CE1 3050</p> <p>Conversation Partner Meeting 1:00pm – 4:00pm</p> <p>EUR Info Session 4:00pm – 6:00pm CE1 3070-80</p>	<p>9</p> <p>Advanced Writing Composition 9:00am – 10:20am CE1 3060</p> <p>Global Communication Skills 10:30am – 11:50am CE1 3050</p> <p>Social Ecology 1:00pm – 4:00pm SBS 3220</p>	<p>10</p> <p>Optional Activity</p>  <p>West LA Tour 9:00am – 10:00pm</p>
<p>11</p> <p>Optional Activity</p>  <p>Surf Kayaking 4:30pm – 8:30pm</p>	<p>12</p> <p>Advanced Writing Composition 9:00am – 10:20am CE1 3060</p> <p>Global Communication Skills 10:30am – 11:50am CE1 3050</p> <p>Social Ecology 1:00pm – 4:00pm SBS 3220</p>	<p>13</p> <p>Advanced Writing Composition 9:00am – 10:20am CE1 3060</p> <p>Global Communication Skills 10:30am – 11:50am CE1 3050</p> <p>SITE VISIT The West Center at UCI w/ CPs 1:00pm – 4:00pm</p>	<p>14</p> <p>Advanced Writing Composition 9:00am – 10:20am CE1 3060</p> <p>Global Communication Skills 10:30am – 11:50am CE1 3050</p> <p>Social Ecology 1:00pm – 4:00pm SBS 3220</p>	<p>15</p> <p>Advanced Writing Composition 9:00am – 10:20am CE1 3060</p> <p>Global Communication Skills 10:30am – 11:50am CE1 3050</p> <p>Conversation Partner Meeting 1:00pm – 4:00pm</p>		
<p>18</p> <p>Optional Activity</p>  <p>Hike at Mt Leon 6:00am – 2:00pm</p>	<p>19</p> <p>Advanced Writing Composition 9:00am – 10:20am CE1 3060</p> <p>Global Communication Skills 10:30am – 11:50am CE1 3050</p> <p>Social Ecology 1:00pm – 4:00pm SBS 3220</p>	<p>20</p> <p>Advanced Writing Composition 9:00am – 10:20am CE1 3060</p> <p>Global Communication Skills 10:30am – 11:50am CE1 3050</p> <p>Conversation Partner Meeting 1:00pm – 4:00pm</p>	<p>21</p> <p>Advanced Writing Composition 9:00am – 10:20am CE1 3060</p> <p>Global Communication Skills 10:30am – 11:50am CE1 3050</p> <p>Social Ecology 1:00pm – 4:00pm SBS 3220</p>	<p>22</p> <p>Advanced Writing Composition 9:00am – 11:00am CE1 3060</p> <p>Global Communication Skills 10:30am – 11:50am CE1 3050</p> <p>Conversation Partner Meeting 1:00pm – 4:00pm</p>	<p>23</p> <p>Advanced Writing Composition 9:00am – 11:00am CE1 3060</p> <p>Global Communication Skills 10:30am – 11:50am CE1 3050</p> <p>Conversation Partner Meeting 1:00pm – 4:00pm</p> <p>Graduation Reception 4:00pm – 6:00pm CE1 3070-80</p>	





Questions?

email: ApplyEUR@ce.uci.edu

website: ip.ce.uci.edu/EUR

